

# CASE STUDY: The History of Water Supply on the Central Coast

## 17. The Construction of the Mangrove Creek Dam

### The preliminary work on construction of the dam started in 1977

"In 1975, after considering the Public Works Department report, the Gosford and Wyong Shire Councils adopted in principle, a joint water supply scheme [which involved among other things] "a large dam on the upper reaches of Mangrove Creek, providing the key storage. ... In November, 1977, work started on the excavation of the diversion tunnel portals by ...Public Works. ...After initial tree and overburden clearing, the siltstone rock was drilled and blasted before removal. During the period in which the tunnel portal excavation was being carried out, a contract was let to Bass Civil Engineering for construction of the diversion tunnel and another contract let to Goninans of Newcastle for the manufacture and supply of mild steel..."

Figure 6: ("Gosford-Wyong Water Supply; The construction of Mangrove Creek Dam Stage 1" Volume 1, Public Works Department, 1982.)

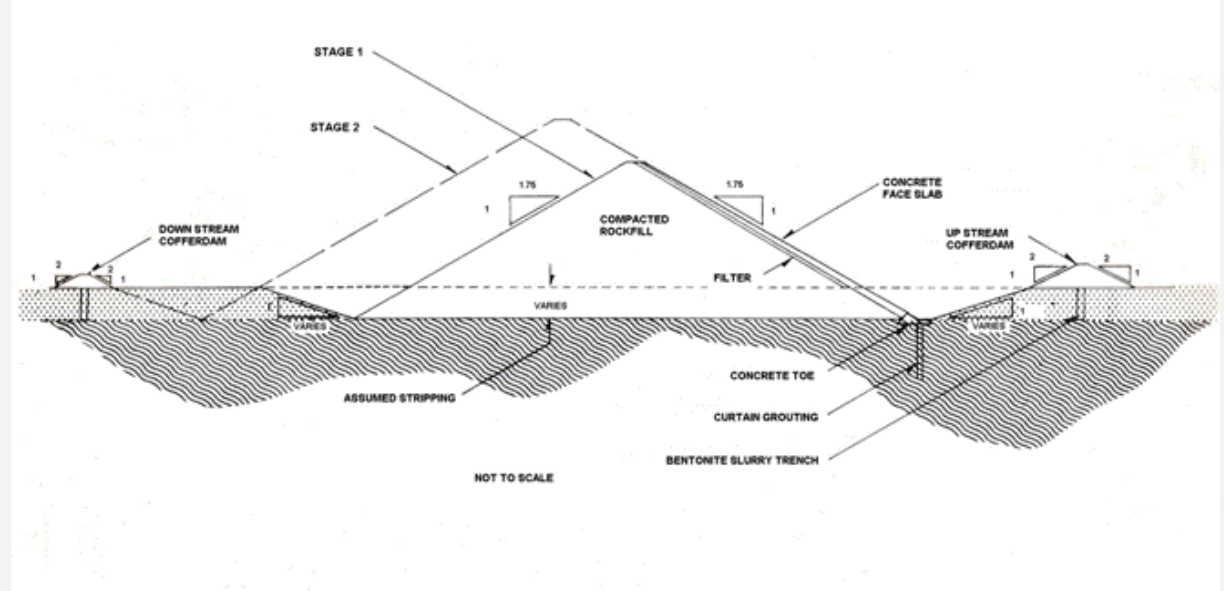
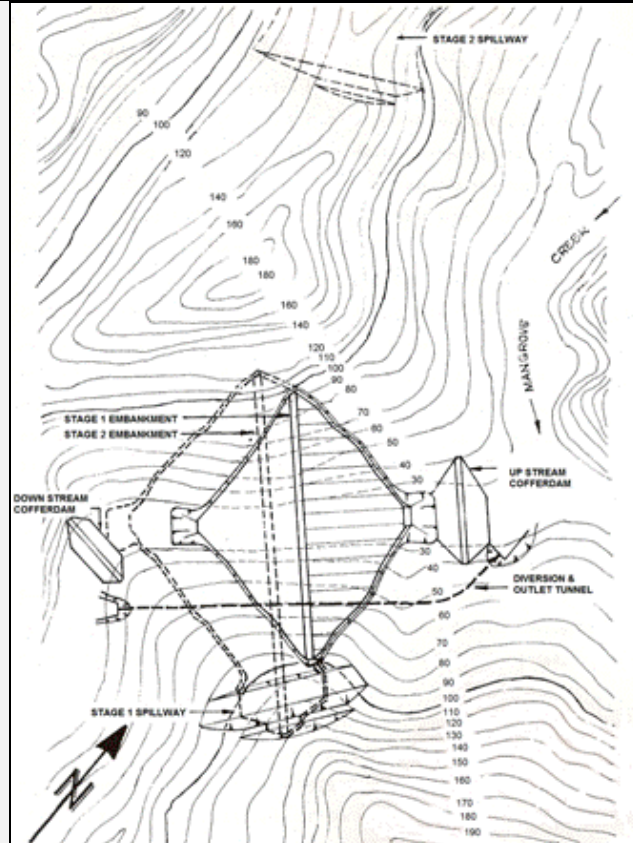


Figure 7: Initial design outline for Mangrove Creek dam ( "Report on Mangrove Creek Damsites, Gosford-Wyong Water Supply" Report No 1 January 1974, Department of Public Works N.S.W. (Note: These initial design concepts were amended in their details during the implementation phase.))